

Camden Companion Card visitor examples

Example 1 – Mary’s holiday in Camden

Mary lives in regional NSW and is visiting the Camden area, as part of a 2 week holiday to Sydney and its surrounds.

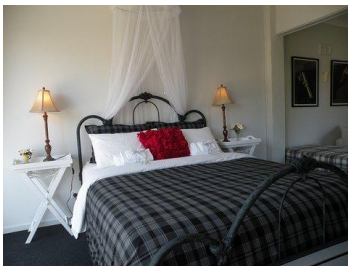
As Mary has a brain injury. She requires the support of a carer to assist in planning and decision making. While she is on holidays, she is unable to travel without a carer. Mary has learnt that the Companion Card is widely accepted in Camden and has accordingly chosen to spend some time in this region.



Camden Valley Way

Day 1 - Mary arrives in Camden in the afternoon and checks in to her accommodation at *Garden Cottage B&B*

Mary chose *Garden Cottage B&B* as they are a Companion Card ‘supporter’ and provide a discounted Monday – Thursday room rate of \$85, including continental breakfast.



Garden Cottage B&B

Day 2 – To start her day they visit *ARTyCaf* where Mary buys a coffee and is provided with a free cake of the day, as a Companion Card cardholder. She spends the morning in the Camden town centre, firstly visiting the Museum and then shopping, particularly in the antique stores.

In the afternoon, Mary visits *Camden Pool* where her carer is provided free entry, as the venue is a Companion Card ‘affiliate’. The Pool has a number of accessibility features.

In the evening, Mary’s enjoys a movie at *Campbelltown Event Cinema*. As this venue is also an ‘affiliate’, again her carer receives free entry, so she is supported to enjoy the movie.



Garden Cottage B&B

Day 3 – On her final day Mary spends her time visiting the wineries. She purchases wine from the *Fussy Grape*, a Companion Card supporter where she receives a 15% discount.

Dinner is spent at *Royal Thailicious*, another supporter of the Companion Card, who provide Mary with a 10% discount on her meal cost.

After another comfortable night at *Garden Cottage B&B* Mary continues on her journey after a very pleasant stay, which she shares with her friends and families who are also eager to visit Camden.



Fussy Grape Winery

Example 2 – A day trip to Camden

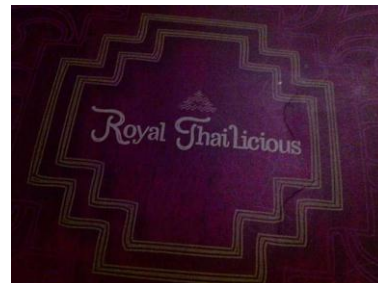
- 8:30am A group of people from a 'day program' depart from Wollongong for a day of fun at Camden. There are 15 people in total, comprised of 10 Companion Card cardholders and 5 companions (carers).
- 9:30am Their first stop for the day is morning tea at ARTyCaf. As a Companion Card 'supporter' ARTyCaf, provides all cardholders with a free 'cake of the day' with their coffee. All 15 have a hot beverage as well as cake, before reminiscing at the Museum and exploring the shops.
- 10:30am Next stop is the Belgenny Farm, the original birthplace of Australian agriculture, where they enjoy the special demonstrations at this historic attraction.
- 1:15pm The group then proceed to Royal ThaiLicious at Mount Annan, enjoying a range of Thai dishes. Cardholders receive a discount of 10% on the total cost of the meal as the restaurant is a Companion Card 'supporter'.
- 2:15pm They continue on their way for a little sightseeing, cruising past some of the picturesque homes, including Camelot, and the beautiful natural scenery that the Camden region has to offer.
- 4:00pm The group arrive home after a pleasant day, tired but very content.
- After such a nice trip, the group makes a visit to Camden a weekly outing, including dining at both the ARTyCaf and Royal ThaiLicious, who made them feel so welcome. Many also plan to come back with their families on the weekends.



Macarthur Park



Belgenny Farm



Camden Scenery